

# SUMMER GARDEN

Finished Quilt Size 50" x 58"



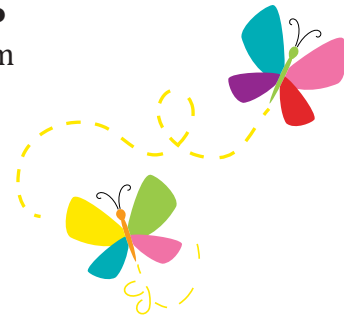
Featuring fabric from the *SNAIL TRAILS* collection by **StudioeFabrics**

## FABRIC AND SUPPLIES NEEDED

- |  |           |   |
|--|-----------|---|
| • Panel (1624-124)                     | 1 panel   | • Backing fabric - 3 ½ yards            |
| • Blue Daisies (1625-11)               | 1 ½ yards | • Fusible web - ¼ yard                  |
| • Red Snails (1626-88)                 | ½ yard    | • Batting - Approx. 60" x 70"           |
| • White Butterflies (1627-100)         | ½ yard    | • Coordinating thread                   |
| • Pink Butterflies (1627-22)           | ¼ yard    | • Rotary cutter, mat, and acrylic ruler |
| • Yellow Faces (1628-44)               | ¼ yard    | • Iron                                  |
| • Green Faces (1628-66)                | ⅓ yard    | • Basic sewing supplies                 |
| • Teal Faces (1628-11 <i>binding</i> ) | ½ yard    |   |



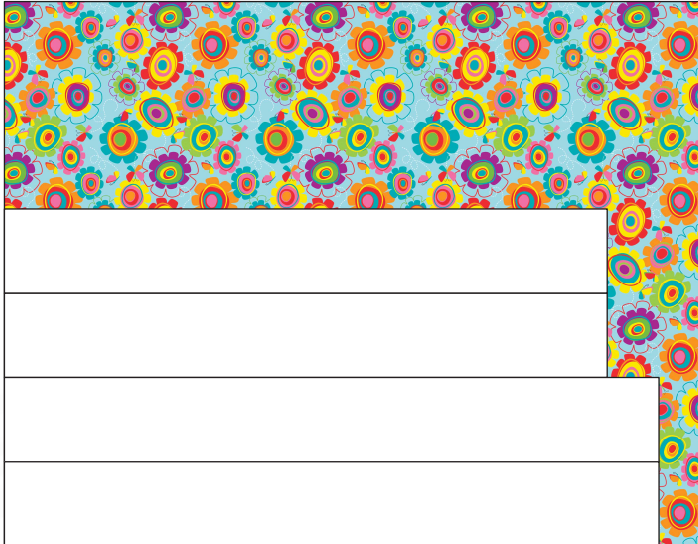
# CUTTING



Cut fabrics as shown.

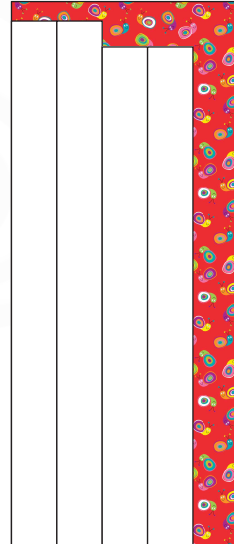
WOF = Width of Fabric • LOF = Length of Fabric

Blue Daisies (1625-11)  
1 ½ yards



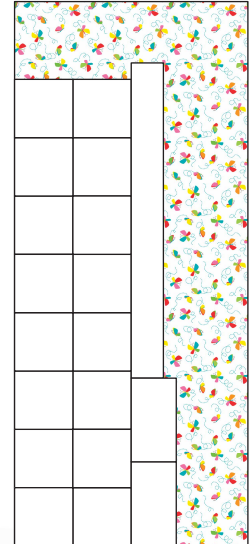
Cut 2 - 6 ½" x 46 ½"  
Cut 2 - 6 ½" x 50 ½"

Red Snails (1626-88)  
½ yard



Cut 2 - 3 ½" x 40 ½"  
Cut 2 - 3 ½" x 38 ½"

White Butterflies (1627-100)  
½ yard



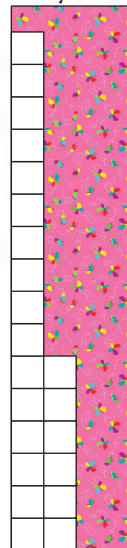
Cut 16 - 4 ⅞" x 4 ⅞"  
Cut 1 - 2 ½" x 24 ½"  
Cut 2 - 3 ½" x 6 ½"

Panel (1624-124)  
1 panel



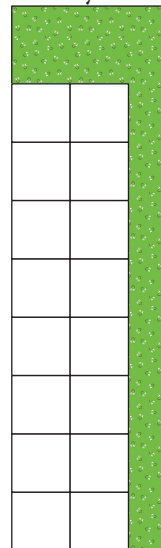
Cut 1 - 20 ½" x 20 ½" (center panel)  
Cut 1 - 6 ½" x 18 ½" (lower panel)  
Cut 2 - 5" x 5" (butterflies)

Pink Butterflies  
(1627-22)  
¼ yard



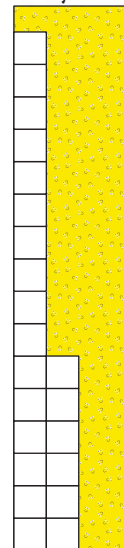
Cut 22 - 2 ½" x 2 ½"

Green Faces  
(1628-66)  
⅓ yard



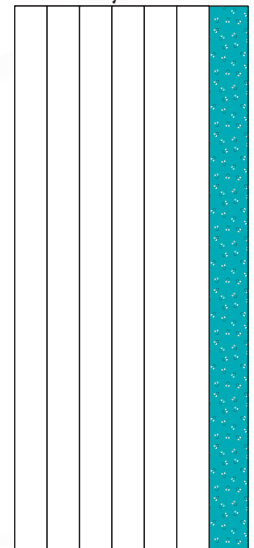
Cut 16 - 4 ⅞" x 4 ⅞"

Yellow Faces  
(1628-44)  
¼ yard



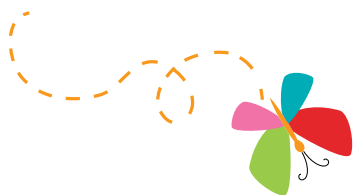
Cut 22 - 2 ½" x 2 ½"

Teal Faces  
(1628-11)  
½ yard



Cut 6 - 2 ½" x wof (binding)





Sew using a  $\frac{1}{4}$ " seam allowance, with right sides together (RST) unless otherwise indicated. Press as shown by arrows.

## Center Assembly Instructions

1. Sew together five  $2\frac{1}{2}$ " x  $2\frac{1}{2}$ " Pink Butterflies squares and five  $2\frac{1}{2}$ " x  $2\frac{1}{2}$ " Yellow Faces squares, alternating them to make one side border (Fig. 1). Press toward the pink squares. Repeat to make a second side border.



2. Sew the borders to each side of the  $20\frac{1}{2}$ " x  $20\frac{1}{2}$ " Panel square (Fig. 2). Press as shown.

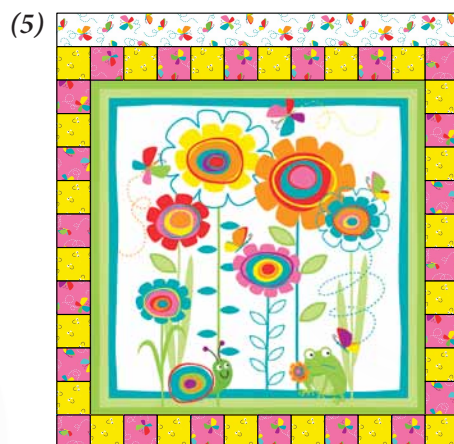
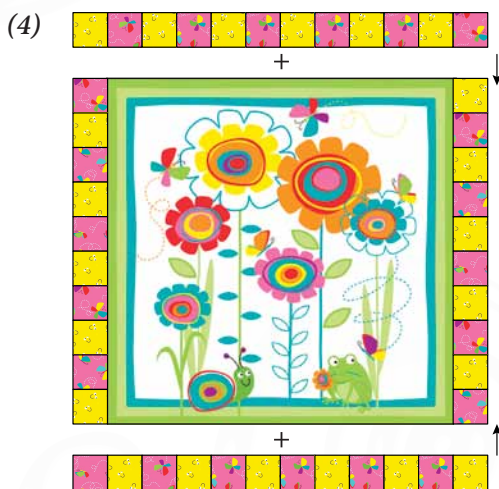


3. Sew together six  $2\frac{1}{2}$ " x  $2\frac{1}{2}$ " Pink Butterflies squares and six  $2\frac{1}{2}$ " x  $2\frac{1}{2}$ " Yellow Faces squares, alternating them to make the top border (Fig. 3). Press toward the Pink squares. Repeat to make the bottom border.



4. Sew the borders to the top and bottom of the  $20\frac{1}{2}$ " x  $20\frac{1}{2}$ " Panel square to make the quilt top center (Fig. 4). Press as shown.

5. Sew one  $2\frac{1}{2}$ " x  $24\frac{1}{2}$ " White Butterflies strip to the top of the quilt top center (Fig. 5). Press as shown.



6. Sew one  $3\frac{1}{2}$ " x  $6\frac{1}{2}$ " White Butterflies strip to each end of the  $6\frac{1}{2}$ " x  $18\frac{1}{2}$ " Panel strip to make the bottom row (Fig. 6).

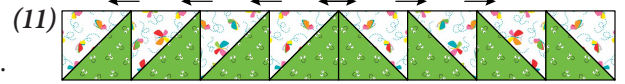
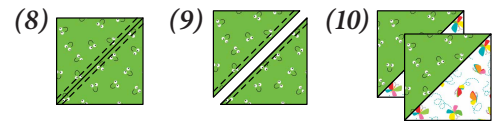


7. Sew the bottom row to the bottom of the center panel to complete the quilt top center (Fig. 7). Press as shown.



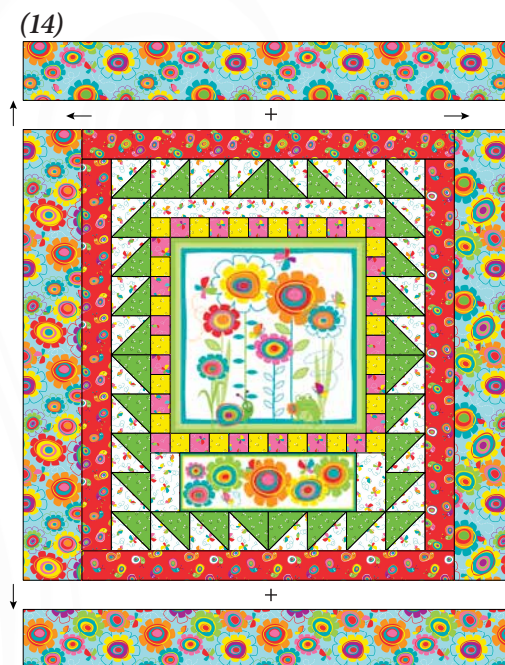
### Half-Square Triangle Borders

8. Place one  $4\frac{7}{8}$ " x  $4\frac{7}{8}$ " Green Faces square on top of one  $4\frac{7}{8}$ " x  $4\frac{7}{8}$ " White Butterflies square, right side together. Draw a line across the diagonal of the top square and sew  $\frac{1}{4}$ " away from each side of the drawn diagonal line (Fig. 8). Cut the two squares apart on the drawn diagonal line (Fig. 9) to make two half-square triangles (Fig. 10). Press toward the Green Faces fabric. Repeat to make thirty-two half-square triangles. Trim to measure  $4\frac{1}{2}$ " x  $4\frac{1}{2}$ ".
9. Sew together eight half-square triangles to make one pieced border (Fig. 11). Press as shown. Repeat to make four pieced borders total.
10. Sew one pieced border to each side of the quilt top center. Sew one pieced border to the top and bottom of the quilt top center (Fig. 12). Press as shown.



### Quilt Top Assembly Instructions

11. Sew one  $3\frac{1}{2}$ " x  $40\frac{1}{2}$ " Red Snails strip to each side of the quilt top. Sew one  $3\frac{1}{2}$ " x  $38\frac{1}{2}$ " Red Snails strip to the top and bottom of the quilt top (Fig. 13). Press as shown.
12. Sew one  $6\frac{1}{2}$ " x  $46\frac{1}{2}$ " Blue Daisies strip to each side of the quilt top. Sew one  $6\frac{1}{2}$ " x  $50\frac{1}{2}$ " Blue Daisies strip to the top and bottom of the quilt top (Fig. 14). Press as shown.
13. Following the manufacturer's instructions, press a 5" x 5" square of fusible web to the wrong side of each 5" x 5" Panel square.
14. Position one 5" Panel square on the upper right corner of the quilt top  $\frac{3}{4}$ " away from the outer edges and press in place (Fig. 15). Stitch the block in place using a decorative stitch such as a satin or buttonhole stitch to finish the raw edges of the 5" Panel squares.



### *Layering, Backing and Quilting*

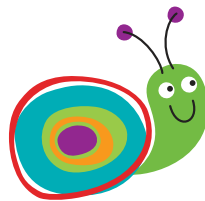
15. Press the quilt top and backing well. Layer backing (wrong side up), batting, pressed quilt top (right side up), and baste. Quilt as desired and trim excess batting and backing when quilting is complete.

### *Binding*

16. Cut the ends of the six binding strips at a 45-degree angle and sew end to end to make one continuous piece of binding. Fold in half lengthwise and press wrong sides together. Sew the binding to the front of the quilt, raw edges together. Turn the folded edge to the back, and hand stitch in place.



SNAIL TRAILS



www.studioefabrics.com

